

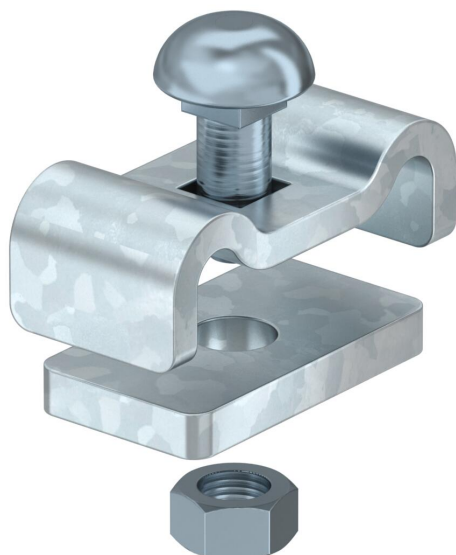
# Technical data sheet

## Gridspan joint connector G

Item number: 6909222



Screwed version of joint connector for mesh cable trays.



**St** Steel

**FT** Hot-dip galvanised

### Master data

Item number	6909222
Type	GS Splice EG
Description 1	Joint connector
Manufacturer	O-line
Dimension	35x17x12
Material	Steel
Surface	Hot-dip galvanised
Surface standard	DIN EN ISO 1461
Smallest sales unit	1
Unit of quantity	Piece
Weight	4 kg
Weight unit	kg/100 pc.

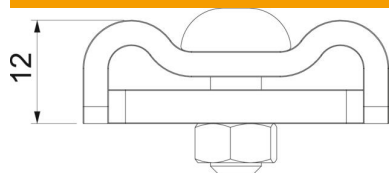
# Technical data sheet

## Gridspan joint connector G

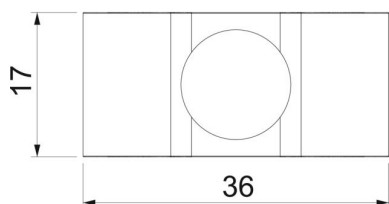
Item number: 6909222



### Dimensions



Length	34 mm
Width	29 mm
Height	24 mm



### Technical data

Quantity of bolts	1 St.
Version for	Joint plate
Maintain electrical functions	no
Suitable for mesh cable tray	yes
Suitable for cable ladder	no
Suitable for cable tray	no
Adjustable connector, horizontal	no
Articulated connector, vertical	no
Suitable for mesh cable tray wire, min.	5 mm
Rustproof steel, pickled	no
Connection type	Screw connector
Wide-span version	no